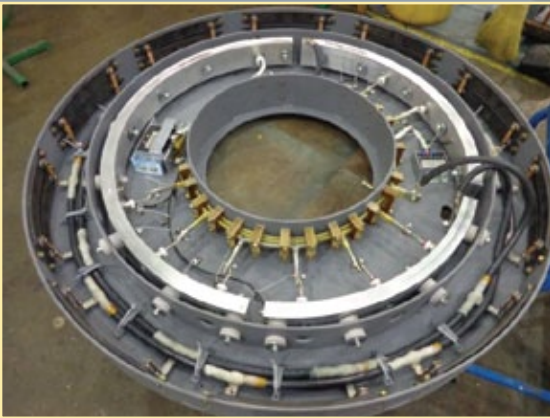


# Aftermarket Services

## Synchronous Control Systems

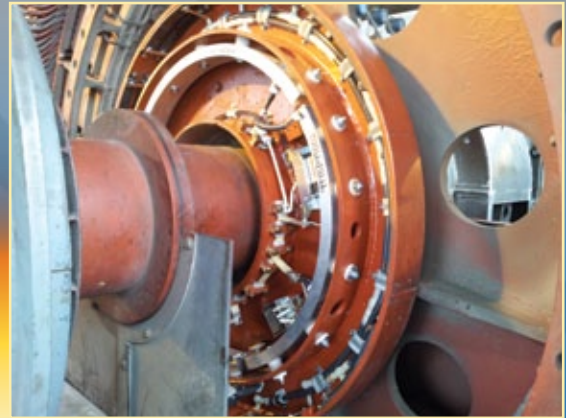
### Refurbishing/ Retrofitting Control Wheels

Before



All new components, heat sinks, conductors, insulators, fasteners, lugs, etc. built on a mock-up wheel

After



Everything on the mock-up transferred to the existing control wheel chassis



A TECO-Westinghouse control wheel customized to fit onto an other OEM motor



A TECO-Westinghouse control wheel customized to fit onto an other OEM motor

### Brushless Control Wheel Replacements and Retrofits

- Convert other OEM unsupported control wheels to a TWMC design
- On-site troubleshooting, repairs, and rebuilds
- In stock renewal parts

**TECO**   **Westinghouse**

[www.tecowestinghouse.com](http://www.tecowestinghouse.com)

888-754-5006

# Aftermarket Services

## Synchronous Control Systems

### Exciter Control Panel Upgrades

Before



An analog, manual only, exciter control panel

After



The same panel space fitted with a new digital exciter and power factor controller

Before



A typical '80s analog exciter control panel crowded with obsolete components

After



The same line-up with only a few components remaining

### Exciter Control Panel Upgrades

- Replace outdated Analog Controls with a modern Digital System using the same panel space
- Superior control and accuracy of Voltage, VAR, and Power Factor Regulation
- Enhanced system response
- Advanced motor protection
- Reliable system operation

**TEC**   **Westinghouse**

[www.tecowestinghouse.com](http://www.tecowestinghouse.com)

888-754-5006