



# Parallel **Helical** and Bevel **Helical** Gear **Reducers**

---

# FEATURES

The PBH series of gearboxes for heavy industries are a range of parallel and bevel helical gearboxes with up to 4 reduction stages, built as standard and designed specifically to ensure maximum reliability in the most arduous conditions.

PBH series reducers present the classic features of parallel and bevel helical gear reducers such as robustness, efficiency, compactness and reliability, combined with universality, ease of application and low maintenance which are a result of a modern design concept, typical of quality reducers.



**PH**  
Bell coupling input  
without motor

- Universal mounting: suitable for horizontal or vertical mounting
- Cast iron casing, rigid and with great lubricant capacity to enhance the thermal capacity
- Casing split into two parts, with reduced and direct maintenance
- Standard solid low speed shaft, with standard and double extension
- Option of double extended, high speed shaft
- Capable of use with large size motors
- High endurance of loads on both low and high speed shaft end
- High performances, reliable and tested
- Ground helical cylindrical gear pairs
- Gleason spiral bevel gear pairs accurately run-in
- Reinforced output shaft bearing with extended bearing housing execution available
- True drywell execution available for certain parallel helical & bevel helical case sizes

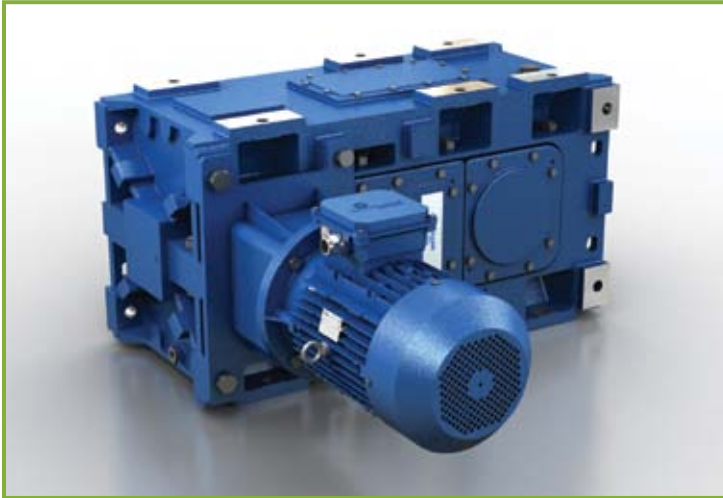


**BH**  
Bell coupling input  
without motor

PARALLEL HELICAL			
PH1	P2H	P3H	P4H
0.98	0.96	0.94	0.92

BEVEL HELICAL		
B2H	B3H	B4H
0.95	0.94	0.92

# RANGE



	Output Torque [ft-lbs]	Ratio	
	Max	Min	Max
<b>PH 180</b>	8,688	1.26	762.00
<b>PH 200</b>	11,771	1.22	659.00
<b>PH 225</b>	17,447	1.28	676.00
<b>PH 250</b>	21,721	1.23	710.00
<b>PH 280</b>	28,027	1.27	708.00
<b>PH 320</b>	35,034	1.25	710.00
<b>PH 355</b>	54,934	1.26	708.00



	Output Torque [ft-lbs]	Ratio	
	Max	Min	Max
<b>BH 180</b>	8,548	5.81	727.00
<b>BH 200</b>	11,842	5.81	660.00
<b>BH 225</b>	16,115	5.20	669.20
<b>BH 250</b>	20,320	5.31	710.00
<b>BH 280</b>	28,027	5.81	676.00
<b>BH 320</b>	34,334	5.60	710.00
<b>BH 355</b>	53,672	5.60	685.00

<b>Case Sizes</b>	180 - 200 - 225 - 250 - 280 - 320 - 355
<b>Output Shaft/ Bore</b>	From Ø100 to Ø180 mm *
<b>Transmission Ratio Range</b>	1.26 - 727

\* Inch dimension output option available by request

# ACCESSORIES



## Output Options

Hollow low speed shaft with keyway
Hollow low speed shaft with shrink disk
Splined hollow, low speed shaft
Cylindrical solid, low speed shaft
Splined solid, low speed shaft
Cylindrical, double extended, solid, low speed shaft
Splined, double extended, solid, low speed shaft

## Lubrication System Options

Bearing lubrication pump
Bearing lubrication motor & pump
Oil temperature probe PT100
Bearing temperature probe PT100
Bimetallic thermostat probe
Pressure switch
Oil level switch with float
Oil level column
Infrared oil level probe

## Cooling and Heating Options

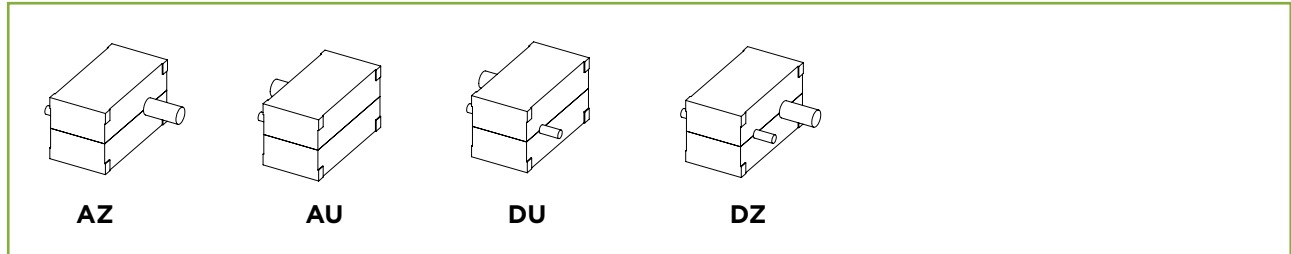
Cooling fan
Cooling water with coil and with or without thermostatic valve
Independent cooling unit: oil/water or oil/air
Oil heater

## Accessories

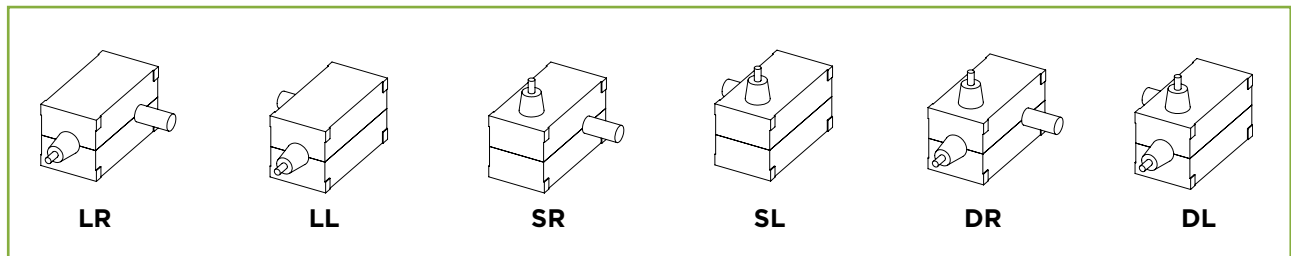
Backstop device
Protective cover for hollow, low speed shaft
Protective cover for hollow, low speed shaft with shrink disc
Hollow, low speed shaft washer
Output flange
Reaction bolt with spring disc
Reaction arm
Special anticorrosion painting
Labyrinth seals with greaser on high and low speed shaft
Fluoro rubber seals
Vent plug with filter
Magnetic plug
NEMA adaptor input flange

# EXECUTIONS

## Parallel Helical

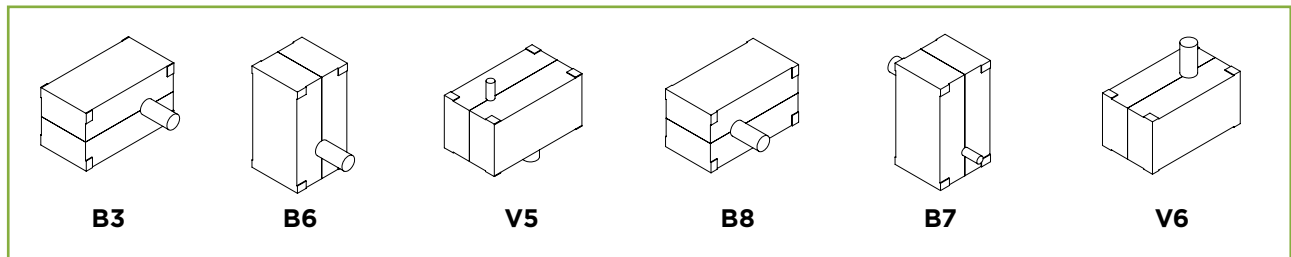


## Bevel Helical

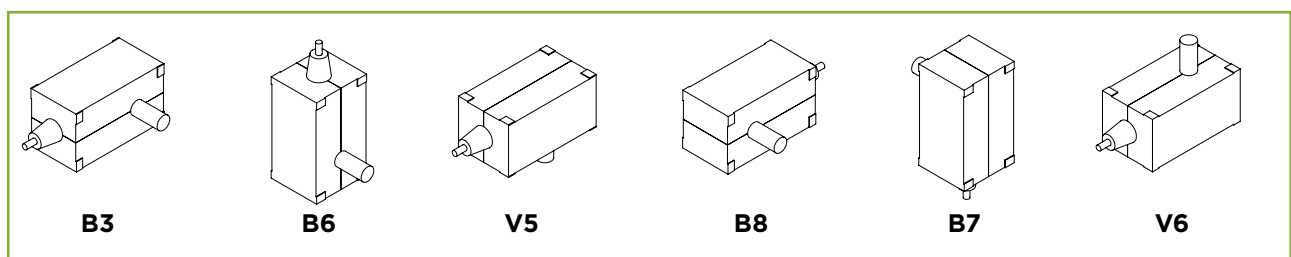


# MOUNTING POSITIONS

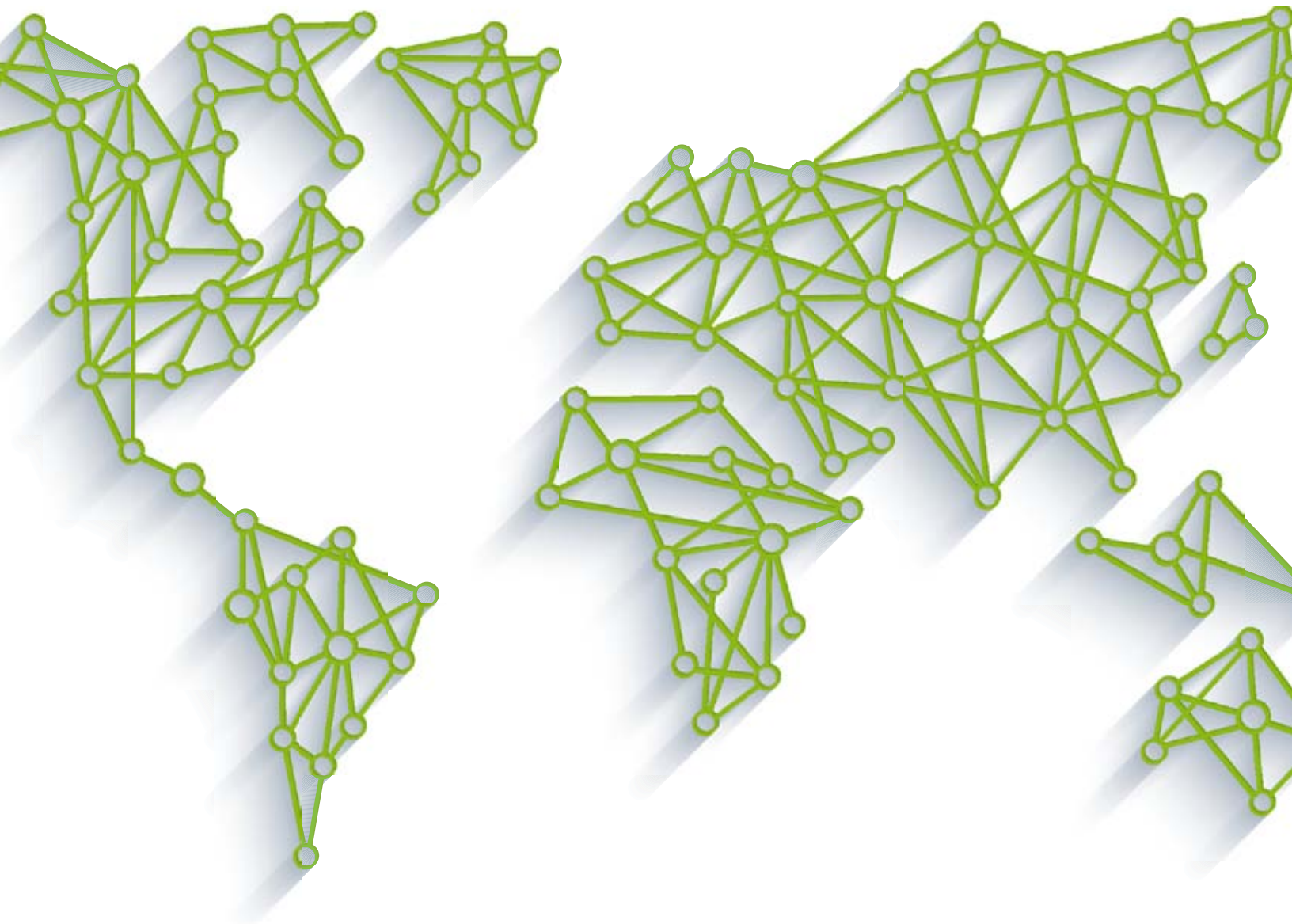
## Parallel Helical



## Bevel Helical



# GLOBAL PRESENCE



TECO-Westinghouse Motor Co.  
5100 North IH-35 - Round Rock, TX 78681  
Phone: 1-800-USE-TECO  
1-800-873-8326  
[www.tecowestinghouse.com](http://www.tecowestinghouse.com)

**TECO**   **Westinghouse**

[www.tecowestinghouse.com](http://www.tecowestinghouse.com)

GR-PBH 08-17